

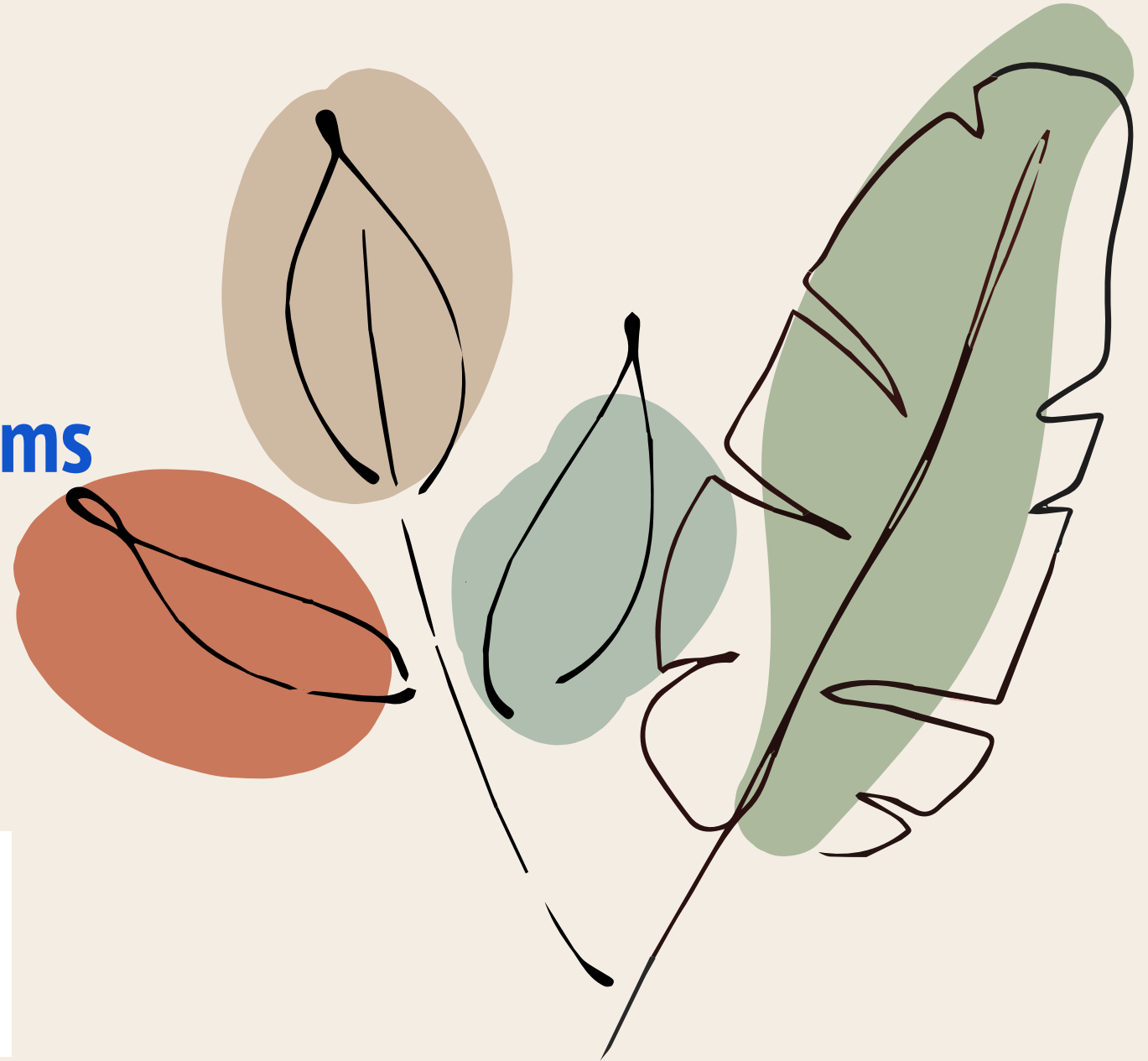
Early Education Parent Webinar

Fullerton School District

Preschool and TK Programs

February 4, 2025

5:00 pm - 6:00 pm



FULLERTON
SCHOOL
DISTRICT



Introductions

Translations Available

At the bottom right of your screen, click on the globe icon for Spanish/Korean translations.

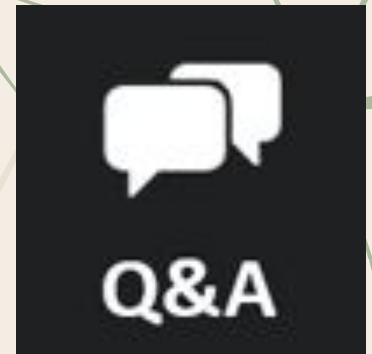


Korean Interpretation
courtesy of
Kyunghye Park



Spanish Interpretation
courtesy of
Sheila Hebert

***Please use the Q&A icon at the bottom of your screen to ask questions.



Early Education Panel

Alma Caballero, Child Welfare and Attendance

Carlene Salinas, Preschool Teacher

Dolores Cortez, State Preschool Services Assistant

Emily McDougall, Director - Ed Services

Dr. Helene Morris, Director - Administrative Services

Jeannette Lujan, Program Specialist- Student Support Services

Dr. Julie Brandon, Director - Student Support Services

Katherine Bezayiff, TK Teacher

Linda Prieto, Program Specialist - Ed Services

Melissa Pepin, TK Teacher

Ruth Gaer, Program Specialist, DLA

Tami Cammarata, Director - Student Support Services

Tania Ruiz, State Preschool Services Assistant

Timothy Bongco, Assistant Director - Ed Services



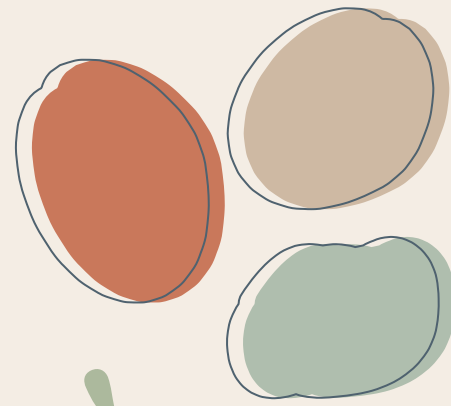
FAQs

Transfers/Open Enrollment
Registration
Students with IEPs

Preschool Program Offerings

at the Fullerton School District

- Full Day/Full Year - Subsidized
- Part Day - Subsidized
- Tuition Based
- Special Education - part day, must qualify



California State Preschool Program - CSPP

Full Day/Full Year - 2025/26

Based on a sliding scale and on family needs for children:

- Who turn 3 years old on or before Dec. 1
 - children who turn 3 on or after Dec. 2, may be enrolled in CSPP after their 3rd birthday
 - Who are 4 years old
 - Who turn 5 before Dec 2 of the current school year
- Who need of minimum of 25 hours per week



California State Preschool Program - CSPP

Part Day - 2025/26

FREE for children:

- Who turn 3 years old on or before Dec. 1 of the fiscal year in which they are enrolled
 - children who turn 3 on or after Dec. 2, may be enrolled in CSPP after their 3rd birthday
- Who turn 4 years old on or before Dec. 1 of the fiscal year in which they are enrolled
- Who turn 5 before September 2, of the current year



Eligibility Criteria for CSPP

Eligibility Priority

- Based on income
- Families experiencing homelessness
- Children receiving services from child protective services
- Residents within specific school boundaries
 - Maple and Valencia Drive



Required Documents

- **Income**
 - Proof of family income from the last 30 days:
 - Pay stubs, CalWORKs Notice of Action (cash aid), child support documentation, self-declaration, etc.
- **Family Size Verification**
 - Birth Certificates or other reliable documentation for **All** children in the family
- **Address Verification**
- **Immunization Record** of the Child Enrolling for Preschool
- **Current Physical Exam**
- **Parent/Guardian/Designated Reader: TB skin test Result, or Clearance**

CSPP Registration Process

- **Complete the Intent to Register Form** - This form can be completed at any time by scanning the QR code. Please make sure to indicate the school year you are applying for.
- **Complete/ fill out the registration packet** - Which can be found on the Fullerton School District website or you can pick up a hard copy at the preschool office located at **1401 W. Valencia Dr., Fullerton, CA 92833**
- **Schedule an appointment with the Preschool Office on or After March 24, 2025, to turn in completed registration packet.**



Preschool Office

714-447-7499

tania_ruiz@myfsd.org

dolores_cortez@myfsd.org

Program Hours & Ratio

Full Day/Full Year - CSPP

- Offered at Richman & Valencia Park Schools
- 237 days of operation
- Monday /Friday
 - 8:00 AM to 4:00 PM
- Schedule varies on family eligibility and need
- Sliding scale may apply \$\$

Ratio: 1 adult to 8 children

Class size: 24 students per session



Program Hours & Ratio

Part Day - CSPP

AM Schedule:

- Monday/Friday 8:00 AM to 11:00 AM
- **AM Sign-in:** 8:00 AM **AM Sign-out:** 11:00 AM

PM Schedule:

- Monday/Friday 12:00 PM to 3:00 PM
- **PM Sign-in:** 12:00 PM **PM Sign-out:** 3:00 PM
- **Ratio:** 1 adult to 8 children
- **Class size:** 24 students per session



Program Philosophy - Preschool Approach Inspired by the Reggio Emilia Philosophy

The Reggio Emilia approach in early childhood is recognized as one of the best programs for children worldwide developed in Italy in the early 1960s as an early childhood educational system to serve families and children.

“Reggio-Inspired” means

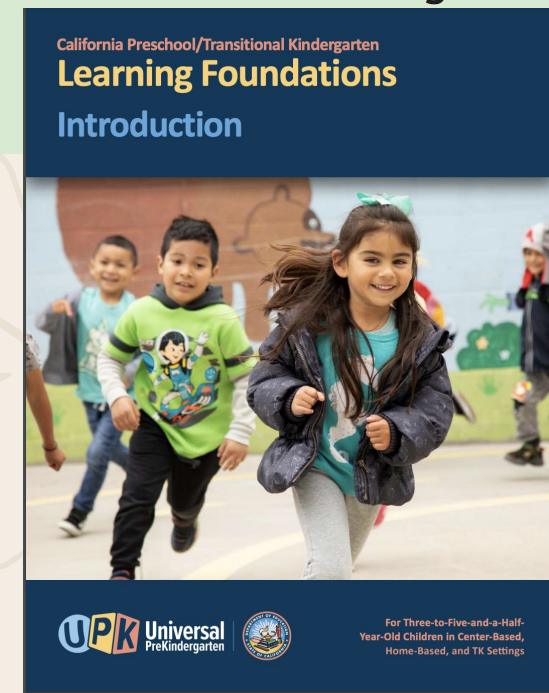
- We view every child as strong, capable, independent, curious, and full of imagination.
- We empower children to think, question, investigate, explore, and navigate the journey of learning.
- We believe children have preparedness, potential, curiosity, interest in relationships and constructing their own learning.



Learning Framework

California Preschool TK Learning Foundations - Curriculum Framework

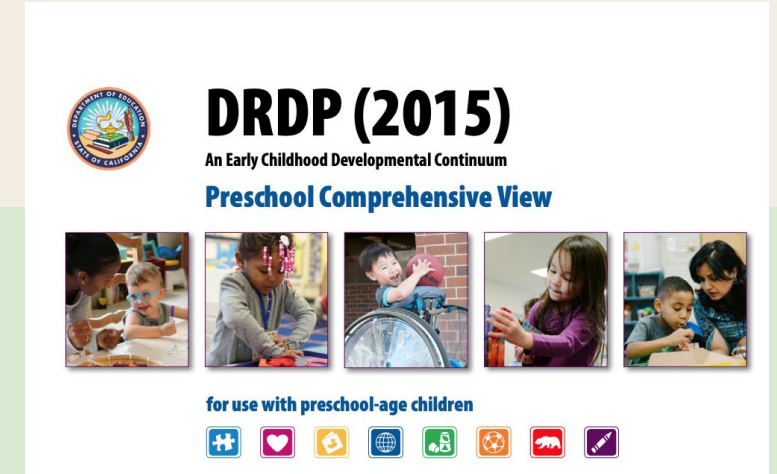
The California Preschool/Transitional Kindergarten Learning Foundations describe competencies—knowledge and skills—that most children can be expected to exhibit in a high-quality program before entering kindergarten. As companion volumes to the foundations, the California Preschool Curriculum Frameworks present strategies for early childhood educators that enrich learning and development opportunities for all California preschool children.



Assessment Tool

Desired Results Developmental Profile (DRDP)

- The DRDP (2015) is a formative assessment instrument developed by the California Department of Education for young children and their families to be used to inform instruction and program development.
- Designed for teachers to observe, document, and reflect on the learning, development, and progress of children.
- Fall and Spring
- Parent Conferences



Desired Results Developmental Profile (DRDP)

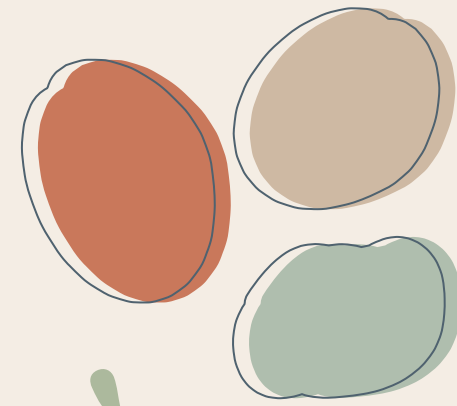
Focus on 8 Developmental Domains

The focus of each domain is on the acquisition of knowledge, skills, or behaviors that reflect each domain's developmental components.

- Approaches to Learning–Self-Regulation
- Social and Emotional Development
- Language and Literacy Development
- English-Language Development
- Cognition, Including Math and Science
- Physical Development–Health (PD-HLTH)
- History-Social Science (HSS)
- Visual and Performing Arts



Tuition Based Preschool



Tuition Based Preschool

Tuition Based at the FSD is offered at Beechwood and Sunset Lane Elementary

Our Beechwood Preschool Program has been in existence since 2005 this preschool program is solely supported by tuition based fees.

The need of the community grew which led to the opening of Sunset Lane Preschool in 2011.



Tuition Based Preschool

Locations: Beechwood - ½ day only
Sunset Lane - ½ day and Full Day

Program Options for 2025-2026:

- 5 day Full Day - M-F 8 a.m. - 4 p.m. (Sunset Lane only)
- 5 day - M-F 8 a.m. to 12 p.m.
- 3 day - M/W/F 8 a.m. to 12 p.m.
- 2 day - T/Th 8 a.m. to 12 p.m.

Age Eligible: Children age 3-5 years old (Minimum age 3 by December 1, 2025)

Class size: 24 students per session

Ratio: 1 adult to 8 children



How to Register

- **Complete the Intent to Register Form** - Scan the QR Code below
- **Join the waitlist**-Once completed, your child will be added to our waitlist for the school of your choice until our lottery is held
- **Lottery system**- after enrolling returning families, a lottery will be conducted for new families on our waitlist
- **Lottery selection**- lotteries will continue until the class capacity is met
- **Submit Registration Fee**- Families selected from the lottery will be contacted by office staff to submit the \$90 registration fee
- **Registration Packet**- will be emailed
- **After your registration packet is complete Call 714-447-7499 to schedule an enrollment appointment**

Scan Me



Tuition-Based Lottery Priorities

1. **Returning Families** – Students currently enrolled in the program and their incoming siblings receive priority.
2. **Fullerton School District (FSD) Employees** – Children of FSD employees are given priority.
3. **Neighborhood Families** – Students who live within the attendance area of the school they are applying to.
4. **Fullerton Residents** – Families who live within Fullerton School District Boundaries.
5. **Open Enrollment** – Remaining spaces will be available to families in the broader community.

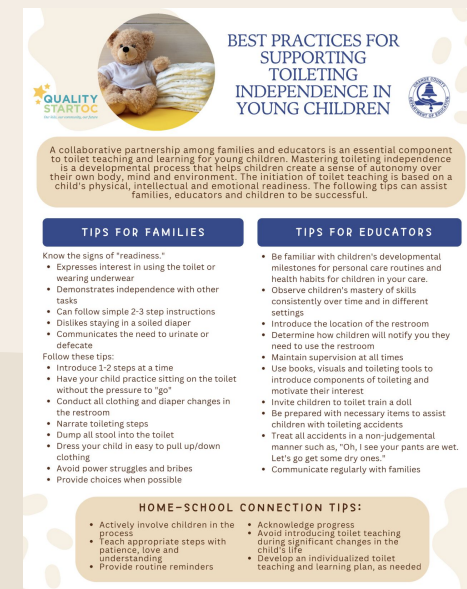
Program Hours & Monthly Tuition

8:00 - 12:00 p.m. 4 hour Half Day Rates 8:00 - 4:00 p.m. 8 hour Full Day Rates (M-F Sunset Lane only) Registration Fee is \$90.00 & Per family \$165.00	
5 days (Monday through Friday)	\$620/mo half day *\$1240/mo full day <i>*Sunset Lane only</i>
3 days (Monday/Wednesday/Friday)	\$344/mo half day
2 Days (Tuesday/Thursday)	\$251/mo half day

Toileting Independence

- “Toileting Independence” over “Potty Training” emphasizes strength-based language: Focuses on child growth rather than a task
- Developmental Milestone: Prepares children for independence in daily life
- A Growing Concern: Increasing numbers of TK-3 students struggle with independent toileting
- Caregiver (home & school) involvement and consistency is key and will help your child reach the goal of toileting independently!
- Please communicate with classroom staff when you see signs of toileting independence—teachers will do the same
- Resources for toileting are shared/posted
- Toileting Plan—must be completed for children currently learning toilet independence

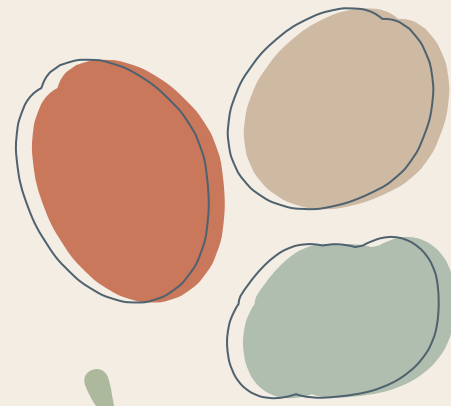
Best Practices for Toileting Independence



Transitional Kindergarten

at the Fullerton School District

- All elementary sites
- Full-day programming
- Universal TK in 2025-2026
- TK for students with an IEP - specific sites



Universal Transitional Kindergarten

AB 130 2021

Policy Map

2021-2022

TK Begins
Sept 2 - Dec 2 Birthdays

2022-2023

TK Expands
Sept 2 - Feb 2 Birthdays

2023-2024

TK Expands
Sept 2 - April 2 Birthdays

2024-2025

TK Expands
Sept 2 - June 2 Birthdays

2025-2026

Universal TK
All children who turn 4 by
September 1 can enroll!



Transitional Kindergarten and Kindergarten Enrollment

Birthdate

September 2, 2020-
September 1, 2021



TK

2025/2026



Kindergarten

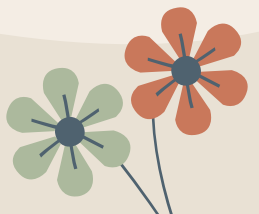
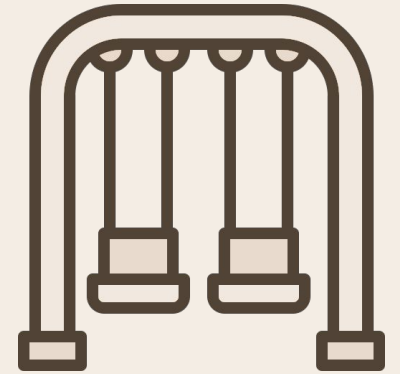
2026/2027





TK Offered at ALL Fullerton Elementary/K-8 sites

- Full-Day at All Sites
- TK or TK/K Combination
- Hours will be the same as Kindergarten
- FSD Dual Language Academy - TK Option at Pacific Dr.
- Encore TheLAB and Encore ASES will offer before and after school care, based on sites, if space is available
 - <https://www.fullertonsd.org/Page/9087>
 - The interest list for new families will open from Monday, April 7th to Friday, April 18th on the website



FSD Dual Language Academy- TK Option

- 90/10 Spanish Program
- TK- 6 Pathway @ Pacific Drive
- K-6 Pathway @ Raymond
- Complete “Intent Form” on website
- Questions & Info: ruth_gaer@myfsd.org



Spanish DLA
Intent Form
TK-8

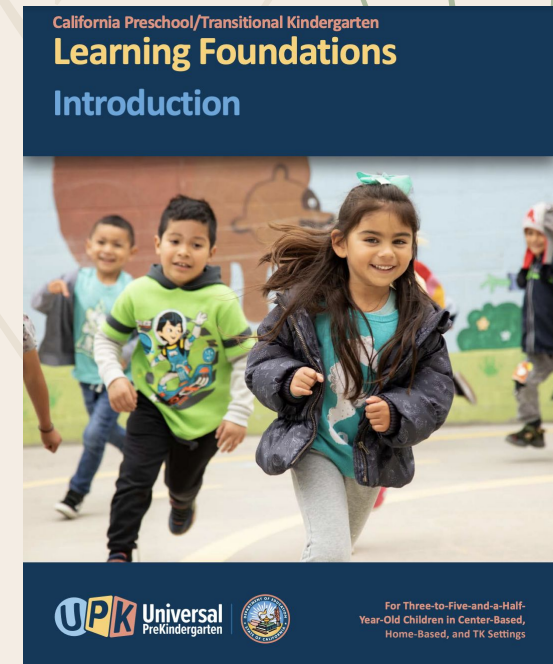


Korean DLA
Intent Form
K-3



Transitional Kindergarten Requirements

- Enrollment is voluntary
- Districts are required to offer TK to any age-eligible child
- TK classes must be taught by a credentialed teacher
- Learning through play www.tkcalifornia.org
- Districts have the flexibility to create and adopt curricula which align with Preschool Transitional Kindergarten Learning Foundations





Transitional Kindergarten IMPLEMENTATION GUIDE

A Resource for California Public School District
Administrators and Teachers

Governor's State Advisory Council on Early Learning and Care
Sacramento • 2013

Transitional Kindergarten

CURRICULUM

Heggerty

World of Wonders for ELA (English Language Arts)

- California English Language Arts and English Language Development Framework
www.cde.ca.gov

Discovery Education for Science

All the Arts for All the Kids

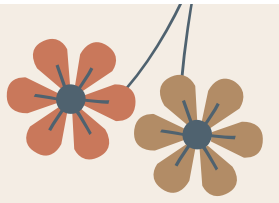




Classroom Environment

- Projected student to adult ratio 10:1 in 2025-2026
- Developmentally appropriate practices
- Learning centers conducive to exploration
- Cooperative play
- Small and whole group activities
- Reggio-Emilia-inspired spaces





Social-Emotional Development

Students' social and emotional growth and development is a primary focus in the classroom. Students learn how to interact with others in positive ways.



TK Through the Arts

- Music
- Dance
- Visual Arts
- Theater



TK Registration

- Registration information will be posted on www.fullertonsd.org in February 2025.
- TK Registration will be available on February 24, 2025.
- Documentation below must be provided upon registration:
 - Birth Certificate
 - Proof of Residency
 - Immunizations

Open Enrollment - Transfers

TK Eligible Students

Open Enrollment information for **both** Intra and Inter District Transfers is posted on the www.fullertonsd.org website. **Open Enrollment will be available from January 13th - February 14th, 2025.**

Intradistrict Transfers:

- Complete an intradistrict transfer form from [Child Welfare and Attendance](#) website.
- You may only choose one school and the grade for which you are eligible.
- **TK families will be notified by the requested school site after April 1, 2025.** *Other grades (K-6) may receive notification on or after March 14.
- We always advise parents to complete registration forms to their home school starting February 24.

Open Enrollment - Transfers

TK Eligible Students

Inter-District Transfers:

- Parents who reside outside of the Fullerton School District boundary must request an Interdistrict transfer at their district of residence.
- Transfer Requests will be sent to [FSD Child Welfare and Attendance](#).
 - You may only choose one school.
- Families will be notified by the requested school site after March 14, 2025

PreK to TK Transition Meetings

PreK Transition Meetings

Transition meetings are needed for PreK moving up to TK/K

It is parent choice for their child to remain in PreK or move up to TK; Kinder eligible students must transition to Kinder

No Transition meetings for students going from TK to K

Receiving team must attend the transition meeting (sending team to collaborate with receiving team on a date)

STAR report for students with NO change in placement or eligibility.


MDR report for students where there WILL BE a change in placement or eligibility.




Preschool Special Education Classes

- All preschool SPED classes are 3 hour programs
- All preschool SPED classes are Monday-Friday
 - AM or PM
- Our co teach programs are partnered with CSPP
 - 3 Coteach Preschools:
 - Commonwealth, Pac Drive, Orangethorpe
 - Peer Buddy Program - partnered with CSPP
 - Woodcrest (AM)
- Preschool for all Program
 - Maple
 - Richman (Pm)
 - Valencia Park
 - Hermosa Drive
- Preschool Discovery Program
 - Commonwealth
- Medically Supportive Classroom
 - Woodcrest (PM)

- Intent to Return to Preschool Survey for SPED due by February 14



FULLERTON SCHOOL DISTRICT - Student Support Services
Preschool Special Education
 1401 W. Valencia Dr. Fullerton, CA 92833
 Telephone: (714) 447-7500



2025-2026 School Year Registration Options

Dear Parent or Guardian,


Records indicate that your child is on an Individualized Education Plan (IEP) and enrolled in an early childhood special education program.

Your child is age-eligible to enroll in Transitional Kindergarten or remain in Preschool for the 2025-2026 school year.

Returning preschool students will not need to have a transition IEP meeting.

If you prefer your child to attend TK, a transition IEP meeting will be held with you and your child's IEP team before the end of the school year. This meeting is required to discuss the most appropriate placement in the TK program for the 2025-2026 school year.


Please complete the Intent to Return survey by Feb. 14, 2025.
 Scan the QR code below or click the link to access the survey.



[Intent to Return to Preschool SPED program for the 2025-2026 School Year](#)

For more information regarding our Preschool Special Education Programs please visit www.fullertonsd.org/SPEDpreschool

Warmest Regards,

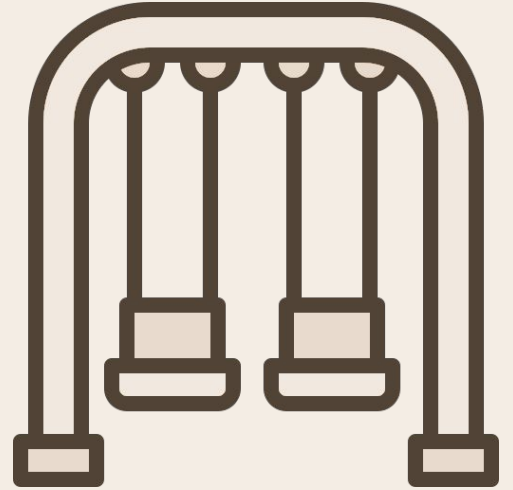

 Jeanette Lujan, Preschool Program Specialist

If you have any questions regarding the contents of this letter you can contact the following:

Jeanette Lujan, Program Specialist
jeanette_lujan@fullerton.k12.ca.us
 714) 447-7501
 Tami Cammarata, Director of Special Education
tami_cammarata@fullerton.k12.ca.us
 714) 447-7500

TK Special Education Classes

- Full-Day Program
 - TK or TK/K Combination
 - Hours will be the same as Kindergarten
 - RSP/Speech ~ all school sites
 - TK Coteach
 - K Coteach
- Mild / Moderate setting
 - Moderate / Severe setting



Q&A



*Thank
you*

Please take a moment to provide
us feedback on
tonight's webinar



Do you have any questions?

Preschool

Linda Prieto, Program Specialist - Ed. Services

linda_prieto@myfsd.org

Tania Ruiz, State Preschool Service Assistant

tania_ruiz@myfsd.org

Dolores Cortez, State Preschool Service Assistant

dolores_cortez@myfsd.org

714-447-7499

Transitional Kindergarten

Jacki Jang, Admin Specialist - Ed. Services

tk_office@myfsd.org

714-447-2858

FSD Transfers/Registration

Child Welfare and Attendance (CWA)

alma_caballero@myfsd.org

714-447-7529

Tami Cammarata, Director of Special Education

tami_cammarata@myfsd.org

714-447-7500